

# **Evolving Roles in Front Line Research Delivery**

**Pam Hindmarsh**

**Lead Nurse Quality & Performance**

**The Christie NIHR Clinical Research Facility**



# History

## Clinical Research Nurses

- Study set up – completing all applications etc.
- Worked alongside investigators in outpatient clinics
- Processed trial bloods in the clinic
- Administered trial treatment to patients in chair within the day case area in the Trust
- Data entry
- “Camped” with secretarial staff

# History (cont'd)

2003 – Development of dedicated unit clinical trials unit to support research delivery

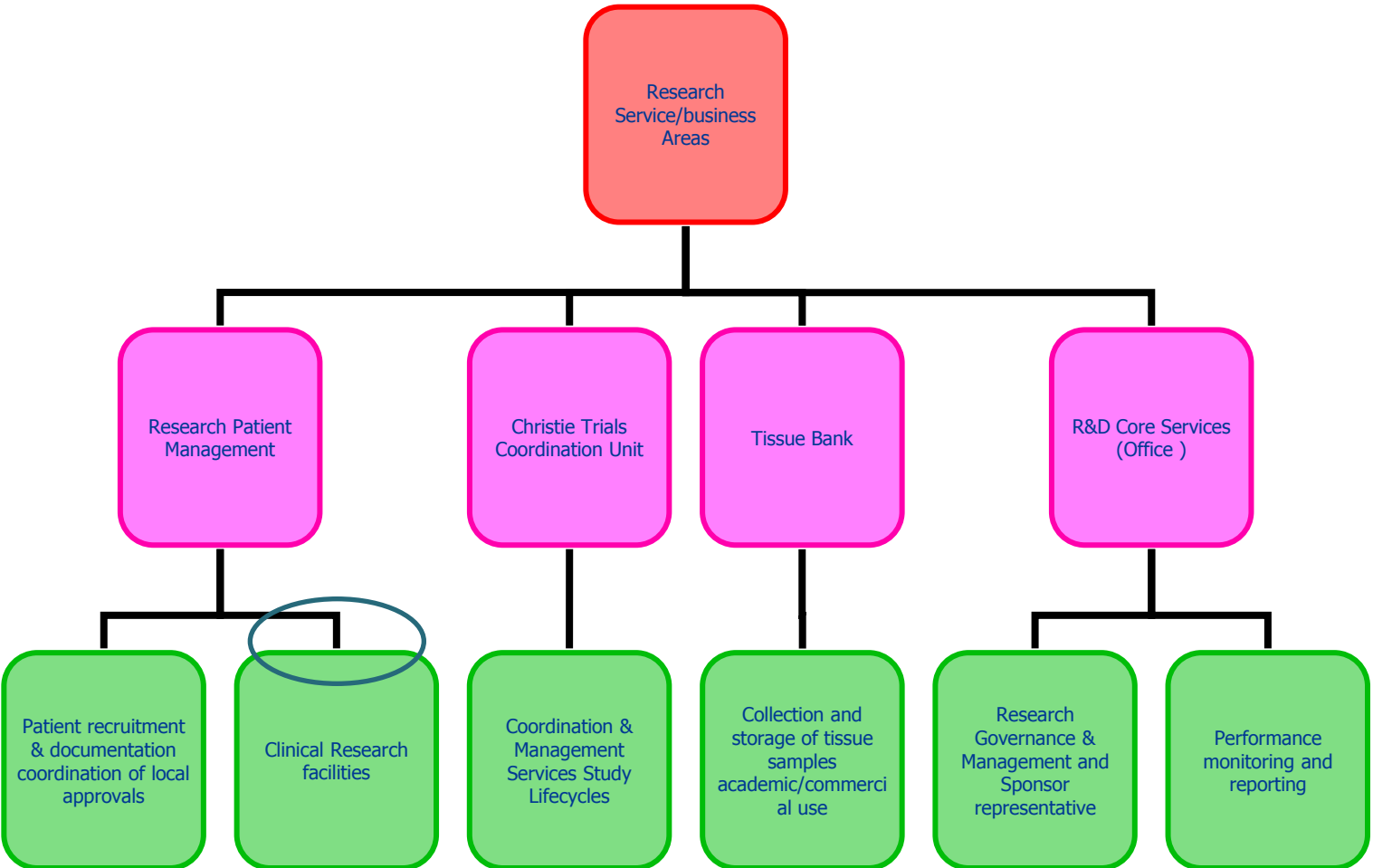
- Office space
- Treatment areas
- Small laboratory area
- Small pharmacy storage space
- Support staff x 2 HCA

2006 – Laboratory technician support

2008 – Introduction of registered nurse support to the clinical trials unit

2010 – Opening of new expanded unit , expansion in staff

# Divisional Structure



# Evolving Support - The Core Team

- Vision to increase capacity and capability to deliver growth in clinical research activity whilst maintaining a quality service
- First dedicated unit manager appointed 2007
- 2008 Recruitment of first registered nurses (2) to work alongside CRNs delivering trial treatments.
- Recruitment of additional support staff including scheduler, lab technicians, HCAs, housekeepers.

# Introduction to the Role of Core Staff Nurse

- Registered nurse to co-ordinate research outpatient clinics
- Registered nurse to support CRN, but not to administer unlicensed trial treatments
- Observation of patients undergoing treatments
- Additional blood samples, if required (pks)
- ECGs, vital signs

# The Core Team Today

- Unit Manager & Deputy Unit Manager
- 12 Registered Nurses
- 10 Health Care Assistants
- 3 Laboratory technicians
- 2 Housekeepers
- 2 Schedulers/receptionist

# Evolving Role of Core Staff Nurse

- Close liaison with research teams and attendance at MDTs
- “Chemotherapy training “
- Introduction of work instructions
- Core staff trained by CRNs to deliver trial treatments in accordance with a work instruction
- Core staff manage administration of treatment for trial patient from beginning to end, including assessments, pks, etc.
- CRN available on site to provide support if required



# Evolving Inpatient Unit

- Opened to first patient end 2013
- Plan to admit patients undergoing trial treatments requiring inpatient stay, e.g. adoptive cell therapy
- Plan to continue this work and increase patient numbers during 2014

# The Challenges

- Large number of trials with which core staff nurses need to be familiar

*Modelling the introduction of core staff becoming more disease/therapeutic area specific*

- Difficulties with rostering and with covering overnight for inpatients

*Introduction of dedicated “bank” of nurses*

# The Future

- Standard treatments administered by service side. Explore more collaborative way of working
- With the wider roll out of standard treatments being delivered nearer to patient homes, how can we deliver later phase trials out there ?
- Introduction of further role- Specialist trials infusion nursing role ...

