



## What is the ECMC Network?

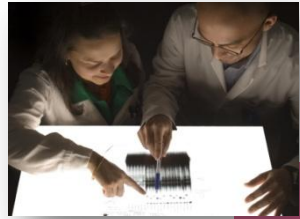
A partnership for driving translational cancer research

# A network of 18 UK-wide ECMCs

- The **majority** of early phase cancer trials are conducted within the ECMC Network
- Each ECMC is awarded ECMC status and funding, in **strict competition** with evaluation from an international scientific expert panel



# What do ECMCs do?



## Expertise

- Resource (Clinical and Non-clinical)
- Technological



## Infrastructure

- Laboratory & clinical facilities

ECMCS



## Delivery

- Early phase trials
- Translational research
- Patient recruitment



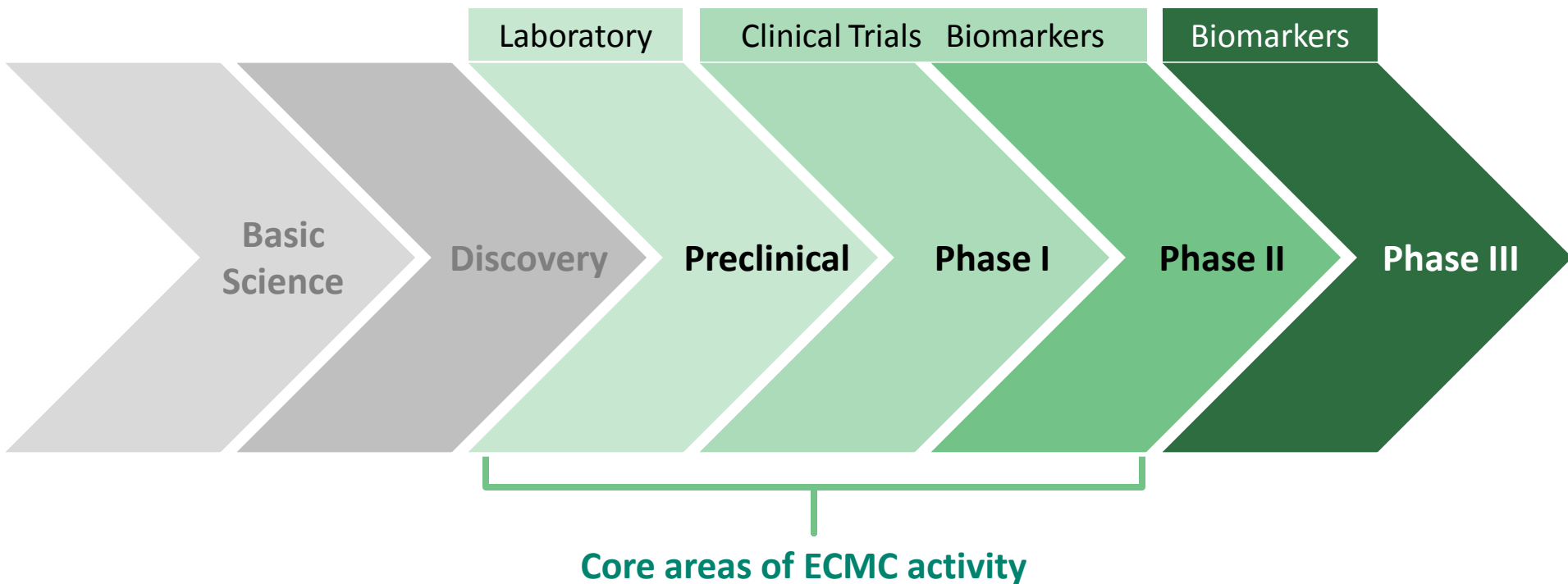
## Networking

- Networking groups
- Skills sharing and training

# Who do we fund?



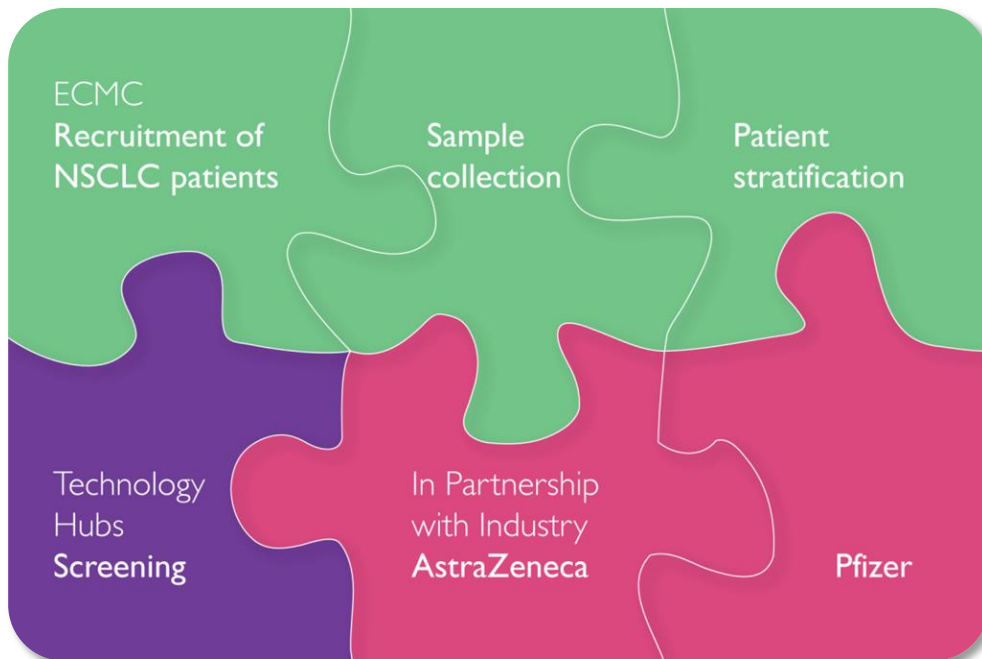
# Where do we fit in the cancer research pathway?



# CRUK Stratified Medicine Programme (SMP)

Driving the molecular stratification of patient cancers to enable more targeted treatments

## The National Matrix Trial



**Matching** patients to the most effective treatments for their cancer



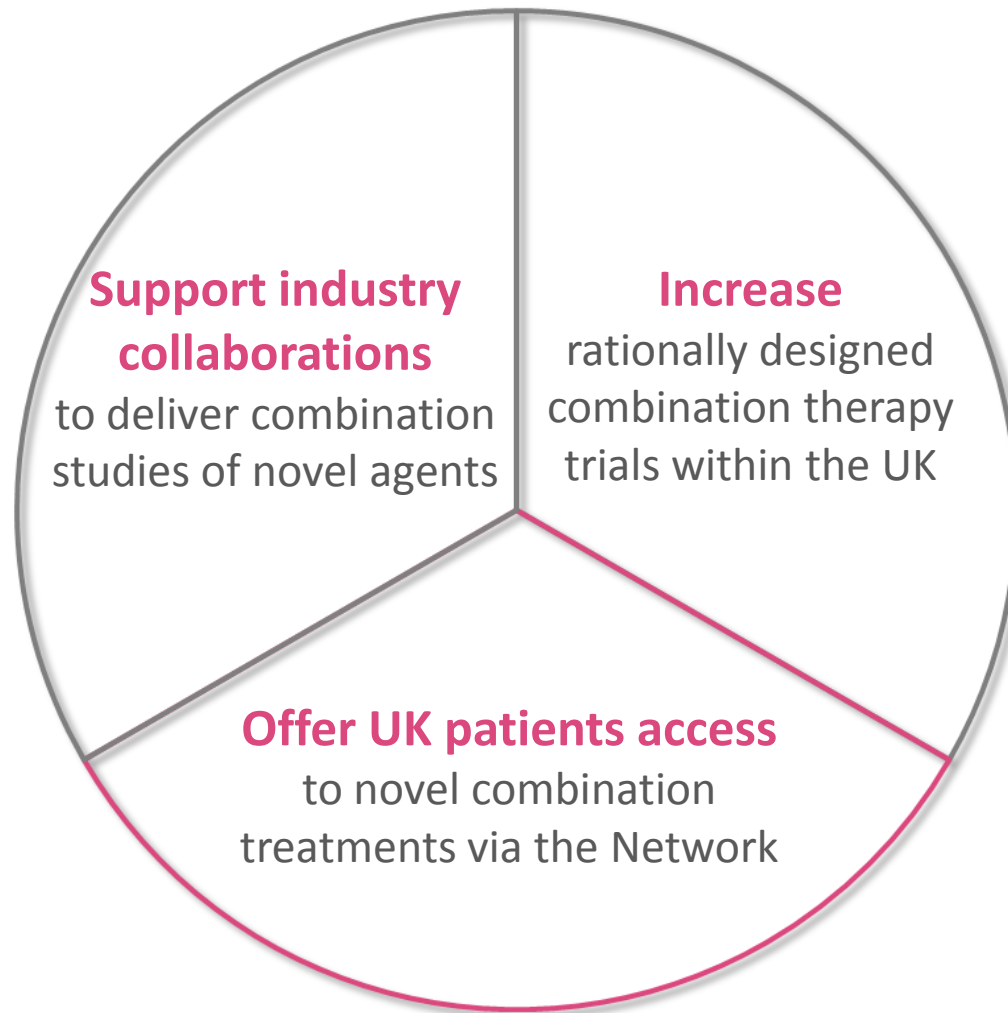
Harnessing the development of the next generation of **targeted** therapies



**Opportunity** for further research into stratified and personalised medicine within the NHS

# ECMC Combinations Alliance

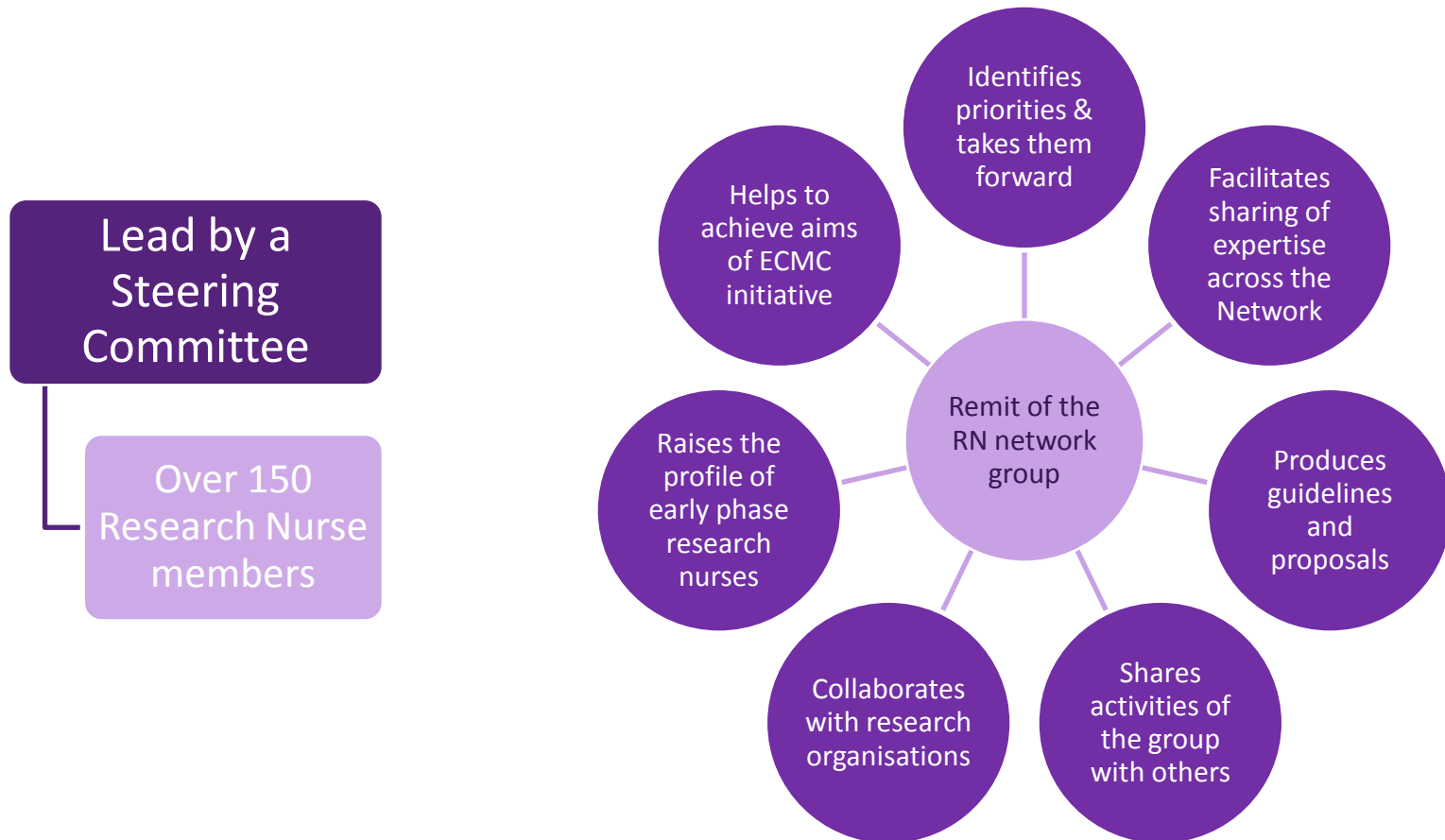
An initiative between Cancer Research UK's Drug Development Office (DDO) and the ECMC Network





# Research Nurse Network Group

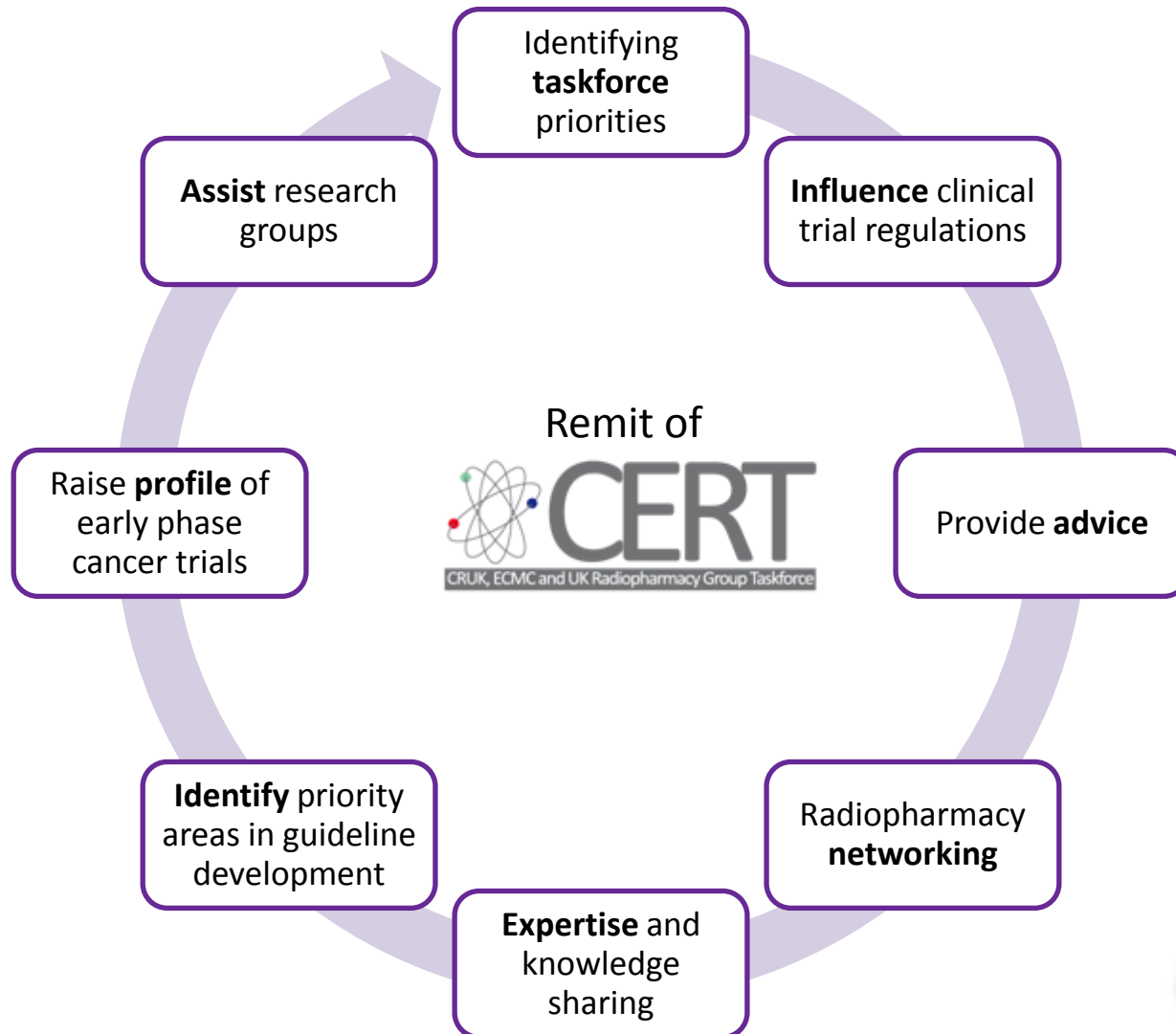
Set up by nurses, this group **actively promotes quality care** for patients taking part in **early phase and translational research**.

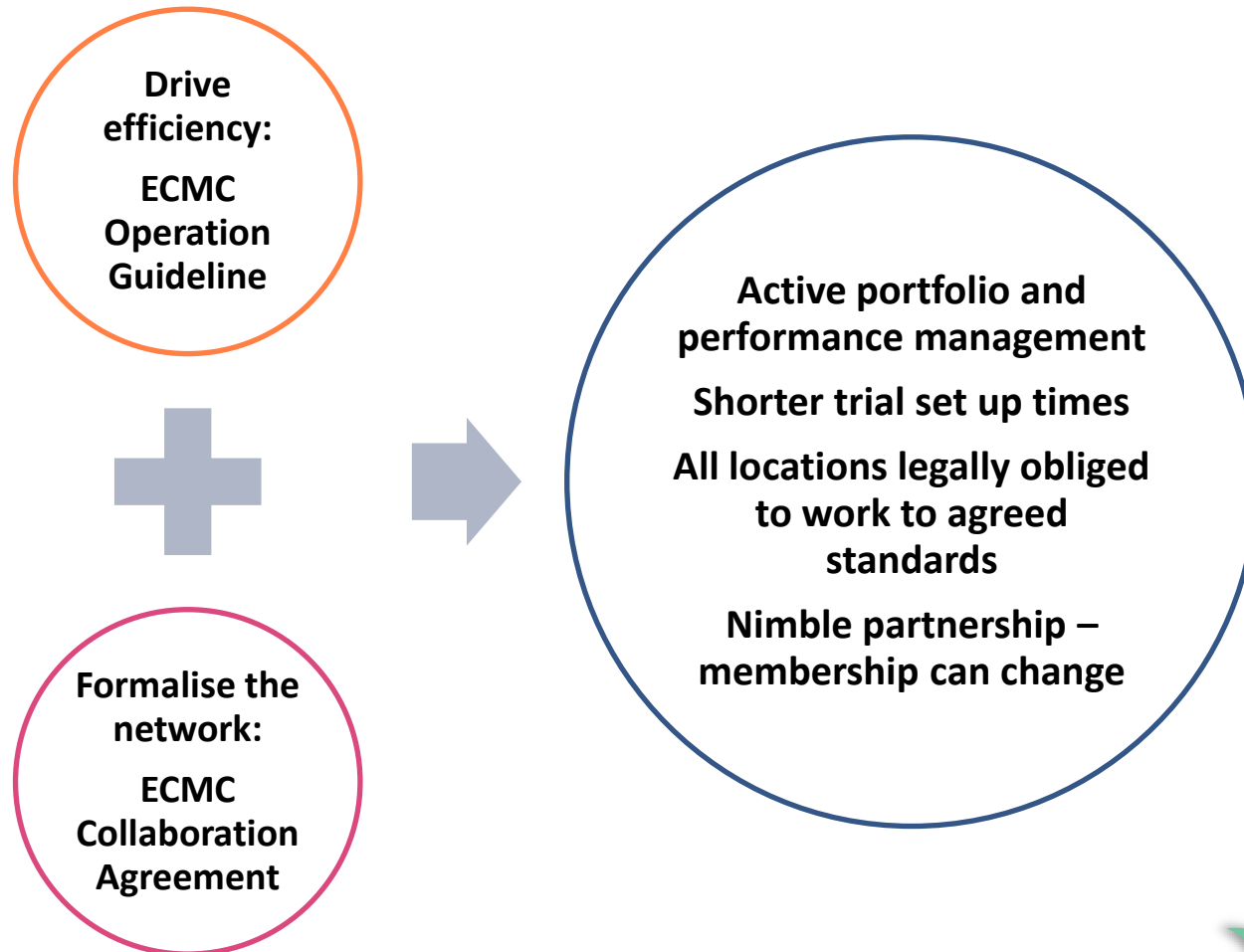




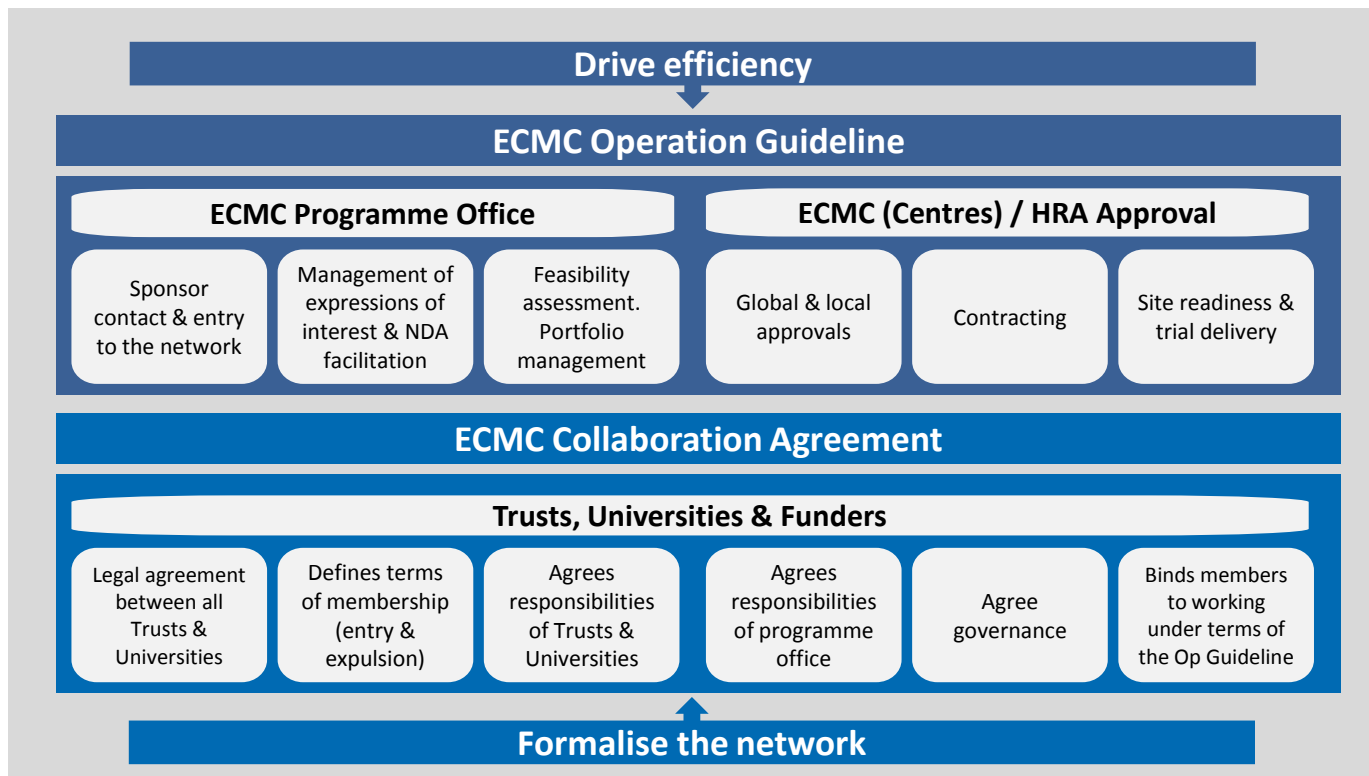
# CERT (CRUK ECMC UK Radiopharmacy Taskforce)

**Aims:** Primary **interface** between the radiopharmacy community and regulatory authorities.





# ECMC-Trial Harmonisation Programme (ETHP)



- Active portfolio and performance management
  - Shorter trial set up times
- All locations legally obliged to work to agreed standards
  - Nimble partnership – membership can change